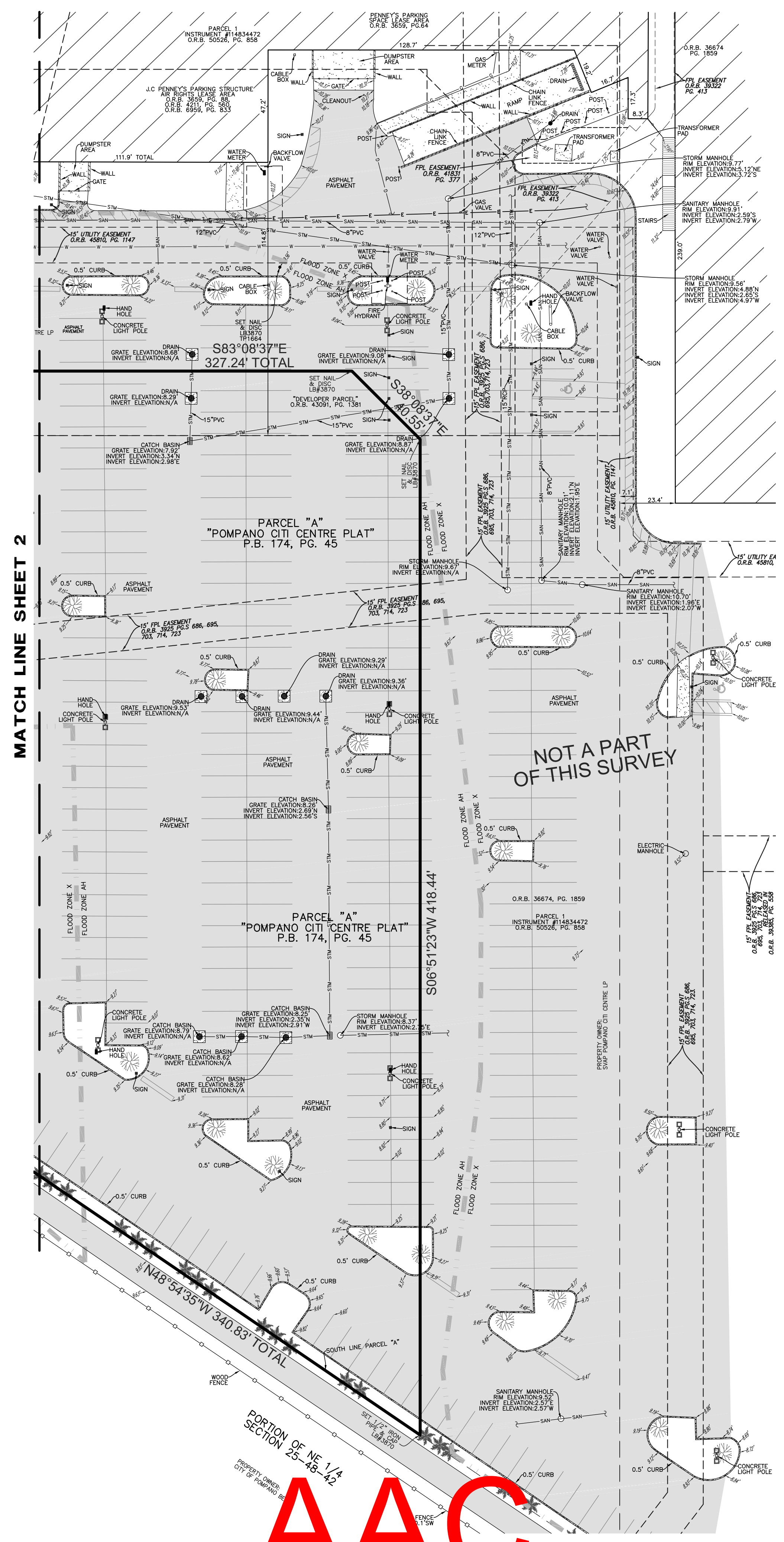


- LEGEND
- CONCRETE
 - ASPHALT PAVEMENT
 - PAVERS
 - ELEVATION
 - OVERHEAD WIRES
 - UNDERGROUND STORM SEWER LINE
 - UNDERGROUND SANITARY SEWER LINE
 - UNDERGROUND WATER LINE
 - UNDERGROUND ELECTRIC LINE
 - UNDERGROUND GAS LINE
 - UNDERGROUND TELEPHONE LINE
 - NON-VEHICULAR ACCESS LINE
 - REINFORCED CONCRETE PIPE
 - CORRUGATED METAL PIPE
 - PVC
 - CL
 - Q.R.B.
 - P.B.
 - PG.
 - TP
 - R
 - CA
 - A
 - FPL
 - LB
 - ★
 - ★
 - ★
- OFFICIAL RECORDS BOOK
PLAT BOOK
PAGE
TRAVERSE POINT (FOR FIELD INFORMATION ONLY)
RADIUS
CENTRAL ANGLE
ARC LENGTH
FLORIDA POWER & LIGHT COMPANY
LICENSED BUSINESS
PALM TREE
OAK TREE
CYPRESS TREE
UNIDENTIFIED TREE



John F Pulice

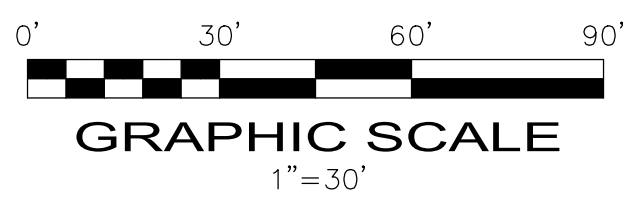
Digitally signed
by John F Pulice
Date: 2021.12.16
12:32:56 -05'00'

COPYRIGHT 2020 BY PULICE LAND SURVEYORS, INC. ALL RIGHTS RESERVED. NO PART OF THIS SURVEY MAY BE REPRODUCED, IN ANY FORM OR BY ANY MEANS, WITHOUT PERMISSION IN WRITING FROM AN OFFICER OF PULICE LAND SURVEYORS, INC.

SHEET 4 OF 4
THIS DOCUMENT IS NEITHER FULL NOR COMPLETE WITHOUT SHEETS 1 THROUGH 4 INCLUSIVE

AAC

PZ21-12000042
05/02/2023



DEVELOPMENT PARCEL POMPAÑO CITY CENTER 1400 NE 23RD STREET POMPAÑO BEACH, BROWARD COUNTY FLORIDA 33062			
TOPOGRAPHIC SURVEY ALTA/NSPS LAND TITLE SURVEY			
	PULICE LAND SURVEYORS, INC. 5381 NOB HILL ROAD SUNRISE, FLORIDA 33351 TELEPHONE: (954) 572-1777 FAX: (954) 572-1778 E-MAIL: surveys@pulicelandssurveyors.com WEBSITE: www.pulicelandssurveyors.com CERTIFICATE OF AUTHORIZATION LB#3870		
	DRAWN BY: B.E.	SCALE: 1" = 30'	FILE: MORGAN GROUP DEVELOPMENT, LLC
	CHECKED BY: J.F.P.	SURVEY DATE: 1/30/20	ORDER NO.: 67754